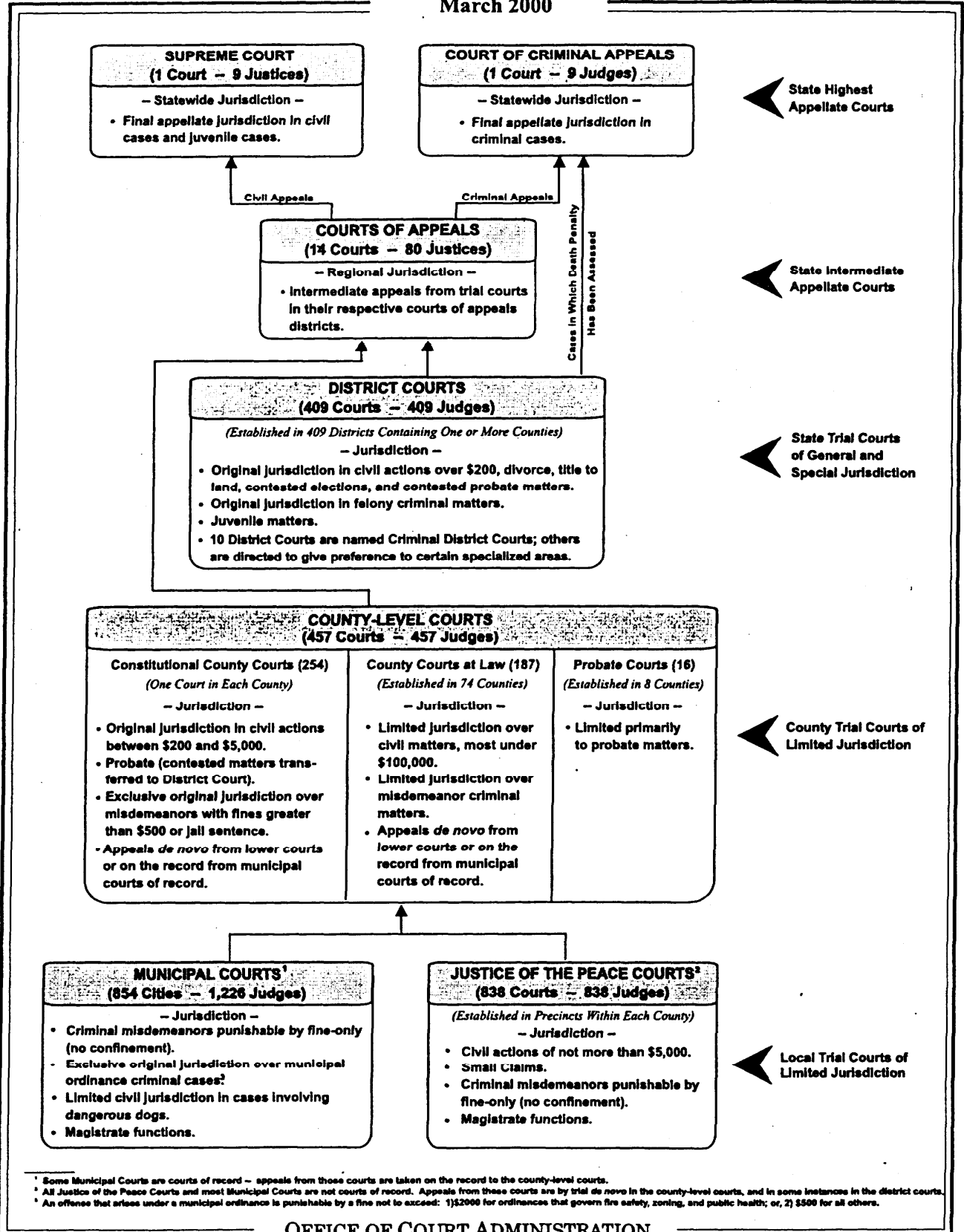


COURT STRUCTURE OF TEXAS

March 2000



SUPREME COURT
(1 Court - 9 Justices)
- Statewide Jurisdiction -
• Final appellate jurisdiction in civil cases and juvenile cases.

COURT OF CRIMINAL APPEALS
(1 Court - 9 Judges)
- Statewide Jurisdiction -
• Final appellate jurisdiction in criminal cases.

COURTS OF APPEALS
(14 Courts - 80 Justices)
- Regional Jurisdiction -
• Intermediate appeals from trial courts in their respective courts of appeals districts.

DISTRICT COURTS
(409 Courts - 409 Judges)
(Established in 409 Districts Containing One or More Counties)
- Jurisdiction -
• Original jurisdiction in civil actions over \$200, divorce, title to land, contested elections, and contested probate matters.
• Original jurisdiction in felony criminal matters.
• Juvenile matters.
• 10 District Courts are named Criminal District Courts; others are directed to give preference to certain specialized areas.

COUNTY-LEVEL COURTS
(457 Courts - 457 Judges)

<p>Constitutional County Courts (254) (One Court in Each County) - Jurisdiction - • Original jurisdiction in civil actions between \$200 and \$5,000. • Probate (contested matters transferred to District Court). • Exclusive original jurisdiction over misdemeanors with fines greater than \$500 or jail sentence. • Appeals <i>de novo</i> from lower courts or on the record from municipal courts of record.</p>	<p>County Courts at Law (187) (Established in 74 Counties) - Jurisdiction - • Limited jurisdiction over civil matters, most under \$100,000. • Limited jurisdiction over misdemeanor criminal matters. • Appeals <i>de novo</i> from lower courts or on the record from municipal courts of record.</p>	<p>Probate Courts (16) (Established in 8 Counties) - Jurisdiction - • Limited primarily to probate matters.</p>
--	--	--

MUNICIPAL COURTS¹
(854 Cities - 1,226 Judges)
- Jurisdiction -
• Criminal misdemeanors punishable by fine-only (no confinement).
• Exclusive original jurisdiction over municipal ordinance criminal cases.²
• Limited civil jurisdiction in cases involving dangerous dogs.
• Magistrate functions.

JUSTICE OF THE PEACE COURTS²
(838 Courts - 838 Judges)
(Established in Precincts Within Each County)
- Jurisdiction -
• Civil actions of not more than \$5,000.
• Small Claims.
• Criminal misdemeanors punishable by fine-only (no confinement).
• Magistrate functions.

¹ Some Municipal Courts are courts of record - appeals from those courts are taken on the record to the county-level courts.
² All Justice of the Peace Courts and most Municipal Courts are not courts of record. Appeals from these courts are by trial *de novo* in the county-level courts, and in some instances in the district courts.
³ An offense that arises under a municipal ordinance is punishable by a fine not to exceed: 1) \$2000 for ordinances that govern fire safety, zoning, and public health; or, 2) \$500 for all others.

OFFICE OF COURT ADMINISTRATION
POST OFFICE BOX 12066
AUSTIN, TEXAS 78711-2066

JUDICIAL ADMINISTRATION IN TEXAS - 2000

COURT OF CRIMINAL APPEALS
 Art. 5, Sec. 31(c), Constitution
 Sec. 22.108, Government Code
 Sec. 22.109, Government Code
 Chapter 56, Government Code

SUPREME COURT
 Art. 5, Sec. 1, Constitution
 Art. 5, Sec. 3, Constitution
 Art. 5, Sec. 31, Constitution
 Sec. 74.021, Government Code
 Sec. 74.024, Government Code
 Sec. 73.001, Government Code

CHIEF JUSTICE
 Sec. 21.004, Government Code
 Sec. 74.057, Government Code
 Sec. 75.002, Government Code
 Sec. 74.056, Government Code
 Sec. 75.003, Government Code
 Sec. 74.003, Government Code
 Chapter 71, Government Code
 Chapter 77, Government Code
 Sec. 74.007, Government Code
 Sec. 74.004, Government Code

TEXAS JUDICIAL COUNCIL
 Chapter 71, Government Code

JUDICIAL COMMITTEE ON INFORMATION TECHNOLOGY
 Chapter 77, Government Code

STATE OFFICE OF COURT ADMINISTRATION
 Chapter 72, Government Code
 Sec. 74.023, Government Code

COURTS OF APPEALS
 Sec. 73.001, Government Code
 Sec. 74.056, Government Code
 Sec. 75.002, Government Code
 Sec. 75.003, Government Code
 Sec. 74.003, Government Code
 Rule 1, Rules of Appellate Procedure

PRESIDING JUDGES OF ADMINISTRATIVE JUDICIAL REGIONS
 Sec. 74.005, Government Code
 Sec. 74.047, Government Code
 Sec. 74.046, Government Code
 Sec. 74.001, Government Code
 Sec. 74.048, Government Code
 Rule 3a, Rules of Civil Procedure
 Sec. 74.056, Government Code
 Rule 18a, Rules of Civil Procedure
 Art. 5, Sec. 7a, Constitution
 Sec. 24.942, Government Code
 Sec. 24.943, Government Code
 Sec. 21.007, Government Code
 Sec. 201.101, Family Code
 Sec. 201.108, Family Code
 Sec. 201.109, Family Code

PRESIDING JUDGE STATUTORY PROBATE COURTS
 Sec. 25.0022, Government Code

LOCAL ADMINISTRATIVE DISTRICT JUDGE
 Sec. 74.091, Government Code
 Sec. 74.092, Government Code

LOCAL ADMINISTRATIVE STATUTORY COUNTY COURT JUDGE
 Sec. 74.091, Government Code
 Sec. 74.092, Government Code

STATUTORY PROBATE COURTS
 Rule 3a, Rules of Civil Procedure
 Ch. 25, Government Code

CONSTITUTIONAL COUNTY COURTS
 Rule 3a, Rules of Civil Procedure
 Art. 5, Sec. 31, Constitution
 Sec. 74.021, Government Code
 Sec. 74.024, Government Code

DISTRICT COURTS
 Sec. 74.093, Government Code
 Rule 3a, Rules of Civil Procedure

STATUTORY COUNTY COURTS
 Sec. 74.093, Government Code
 Rule 3a, Rules of Civil Procedure

JUSTICE COURTS
 Rules 523-591, Rules of Civil Procedure
 Ch. 28, Government Code
 Ch. 45, Code of Criminal Procedure
 Art. 5, Sec. 31, Constitution
 Sec. 74.021, Government Code
 Sec. 74.024, Government Code

MUNICIPAL COURTS
 Ch. 45, Code of Criminal Procedure
 Sec. 30.501, Government Code
 Art. 5, Sec. 31, Constitution
 Sec. 74.021, Government Code
 Sec. 74.024, Government Code

OFFICE OF COURT ADMINISTRATION
 POST OFFICE BOX 12066
 AUSTIN, TEXAS 78711-2066
 512/463-1625